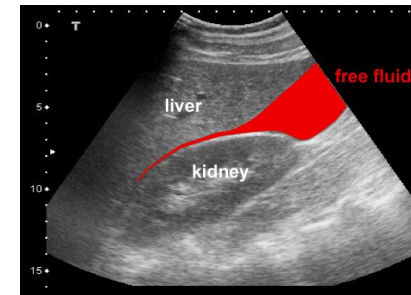


**West Suffolk FUSIC and FAMUS course**  
*6<sup>th</sup> and 7<sup>th</sup> of November 2025*



A two day course aimed at:

- Intensivist and Anaesthetist
- Acute Medicine and Emergency medicine physicians

Course includes:

- **FUSIC** and **FAMUS** Heart, Lung, Abdomen, Vascular and DVT
- Delivered by accredited faculty group consisting of accredited consultants from ICU, cardiology, Radiology, ED and Acute medicine.

**Course registration: [Bookcpd.com](https://bookcpd.com) (search West Suffolk FUSIC course), see QR code**

Contacts: [abbie.gray@wsh.nhs.uk](mailto:abbie.gray@wsh.nhs.uk); [Kushbhovmick@gmail.com](mailto:Kushbhovmick@gmail.com); [drgvk2005@doctors.org.uk](mailto:drgvk2005@doctors.org.uk)

Venue: Ashlar House, 23 Eastern Way, Bury St Edmunds, IP32 7AB