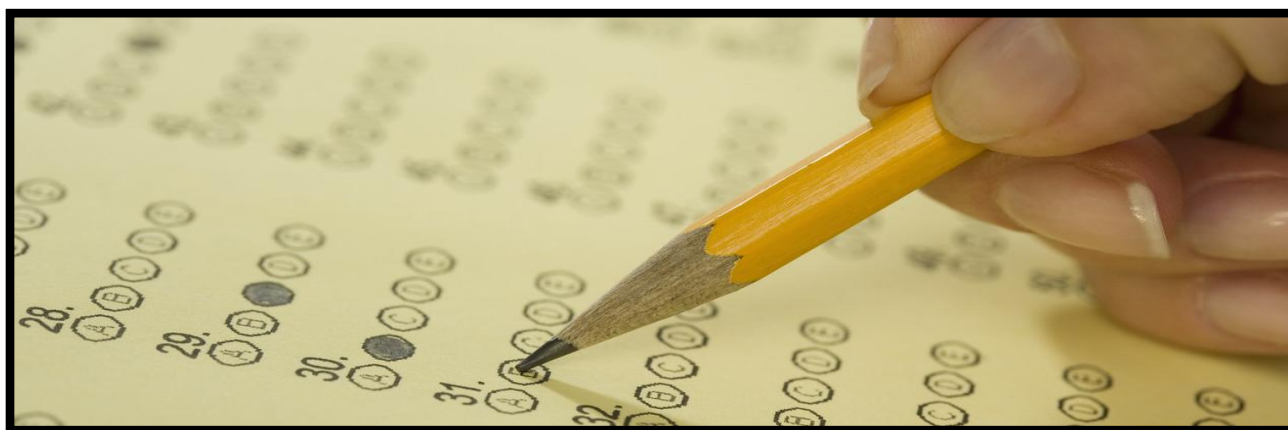


GSTT PRIMARY FRCA MCQ/SBA COURSE



TIME TABLE – TUESDAY-THURSDAY

MAIN ROOM

08:00-08:15 Registration

SMALL GROUPS

08:15-11:15 Cycle 1 (+ Coffee 10:00)

11:15-14:30 Cycle 2 (+ Lunch 13:00)

14:30-17:30 Cycle 3 (+ Coffee 15:15)

EACH CYCLE

45mins Question paper (exam conditions)

135mins Discussion/Research (small group learning)

<http://gsttprimaryfrca.wordpress.com/>